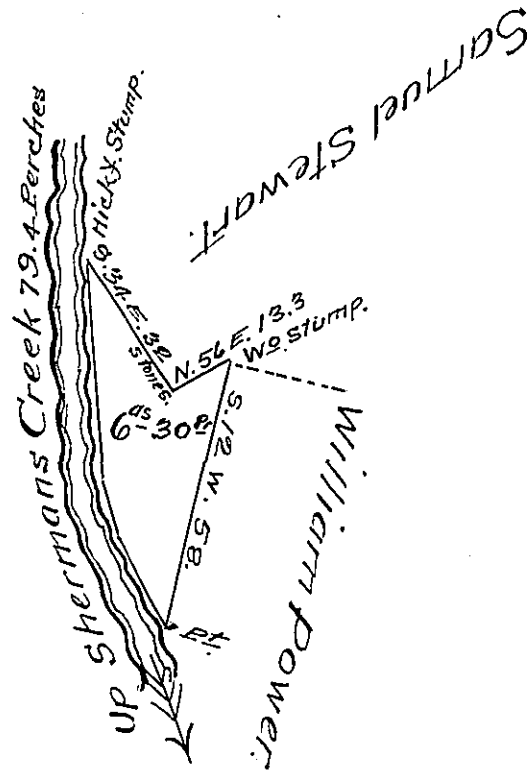


Courses & Distances up Creek }

N. 31	W. 21.	
N. 17	W. 12.	
N. 3	W. 46.4	
		79.4



Draft of a tract of land Situate in Tyrone Township Perry County Containing Six acres thirty perches & allowance of six per Cent for roads &c. Surveyed October 24th. 1850. In pursuance of a warrant granted William Power dated 3^d. June 1814 and an Order of resurvey from the Board of Property on the same dated October 25th. 1841.

Pr. Wm. Wilson D.S.

John Laporte Esq. }
Surveyor General of Pa. }

IN TESTIMONY that the above is a copy of the original remaining on file in the Department of Internal Affairs of Pennsylvania, made conformably to an Act of Assembly approved the 16th day of February, 1833, I have hereunto set my Hand and caused the Seal of said Department to be affixed at Harrisburg, this twentieth day of September 1907.

Henry Howell
Secretary of Internal Affairs.